

Attachments Guide

Product Code	Product Name	Steel	Precast Concrete	Formwork	Concrete	Bridge	Trailer	Civil Engineering
000009	Multi Slab Clamp				•			
000010	Aluminium Beam Clamp			•				
000016	K2 Socket Base				•			
000019	Socket Plate				•			
000020	Primary Beam Clamp			•				
000023	Max Adj. I-beam Clamp	•						
000040	Sacrificial Socket	•	•					
000042	Adj. I-Beam clamp	•						
000047	Adj. Slab edge bracket				•			
000048	Parapet Replacement Plate				•	•		
000052	Groundworks / Vehicle Bed Clamp						•	•
000075	Staircase Clamp				•			
000076	I-Beam Attachment	•						
000085	Adaptor Socket	•	•				•	•
000900	Precast Combi Socket		•					
000901	Lattice Connector (Torpedo)		•					
000902	Plastic Sleeve		•					

Attachments Guide

KGUARD® International has a wide range of versatile attachments that deliver world leading edge protection on many various applications. If the solution you require is not listed, please contact our customer services team.

Flexible slab clamp which can be used horizontally or vertically. Range of 100mm-650mm.



Multi Slab Clamp

Code 000009

U-section compatible with a 150mm beam width with a speedy wing nut locking device.



Aluminium Beam Clamp

Code 000010

Compatible with all KGuard® posts. Features the unique Klock safety system with double locking feature.



K2 Socket Base

Code 000016

Used where fixings need to be regularly inspected without compromising the system installation. Fixings are countersunk to eliminate trip hazards.



Socket Plate

Code 000019

U-section compatible with a 150mm beam width with a speedy wing nut locking device.



Primary Beam Clamp

Code 000020

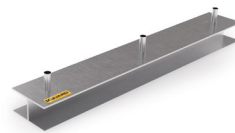
Horizontal and vertical adjustment to suit steel beams. Range of 100mm to 1000mm flange width. Beam height up to a 1000mm flange thickness up to 100mm.



Maxi Adj. I-Beam Clamp + Adj. I Beam Clamp

Code 000023 & 000042

Sockets are welded onto the steelwork either before fabrication or on site before erection.



Sacrificial Socket

Code 000040

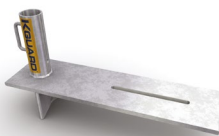
A flexible slab edge clamp with sliding socket detail, and pre drilled fixing holes.



Adj. Slab Edge Bracket

Code 000047

Developed in conjunction with Highway Maintenance Contractors with lanyard fixing points to allow traffic to flow underneath.



Parapet Replacement Plate

Code 000048

Edge protect system for trench lining & sheet piling. Additionally used as vehicle bed clamp. 0-200mm adjustment.



Groundwork / Vehicle Bed Clamp

Code 000052

Mechanical clamp that suits any staircase profile, in-situ, pre-cast or steel.



Staircase Clamp

Code 000075

Brackets are bolted onto the steelwork beam webs up to 2400mm centres.



I-Beam Attachment

Code 000076

Used with multi-slab clamp, sacrificial socket and groundworks clamp to create a connecting base for any KGuard® post.



Adaptor Socket

Code 000085

Combi socket to be used in pre cast concrete up to 120mm using the J-bolt to fix onto rebar from 16mm - 20mm.



Precast Combi Socket

Code 000900

For use with pre-cast concrete planks / biscuits, to suit any plank / insitu topping depths. Compatible with several types of Cast-In Socket and all KGUARD® Posts.



Lattice Connector (Torpedo)

Code 000901

Plastic sleeve to be used with the torpedo to allow the product to be reused and is ordered to finished floor level.



Plastic Sleeve

Code 000902