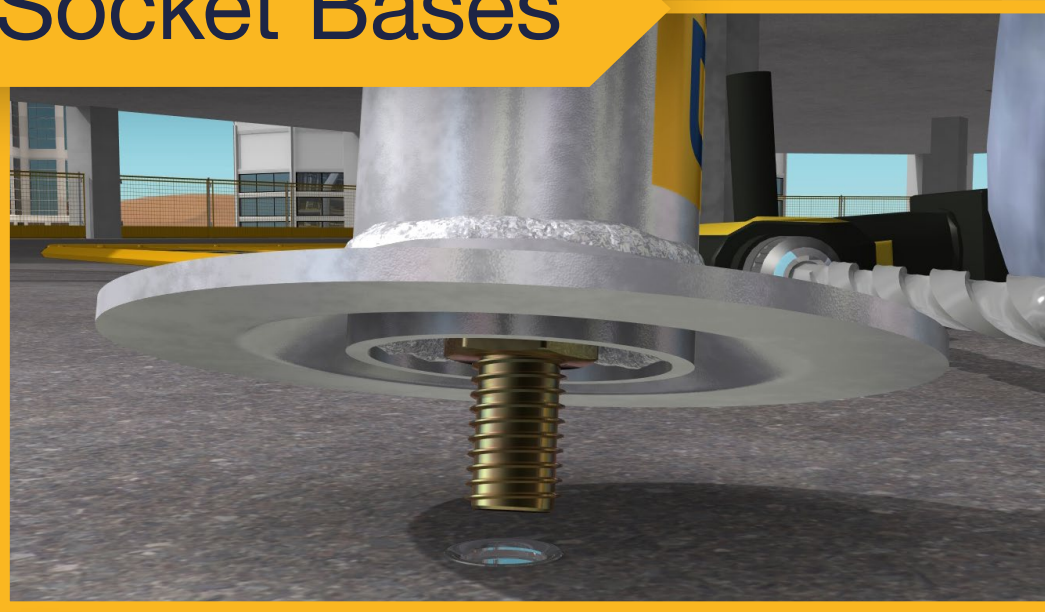


KGUARD® Multi-Application System (M.A.S) Installation Guide

When working with concrete slabs the barrier protection can be erected in three ways - with socket bases, adjustable slab edge brackets and multi-slab clamps.

Socket Bases



1

Drill a $\varnothing 20\text{mm}$ hole
70mm deep no less than
220mm from the slab edge.
Ensure that sharp, accurate and well
maintained drill bits are used.
Blow out any debris from
the hole after the
drilling stage.



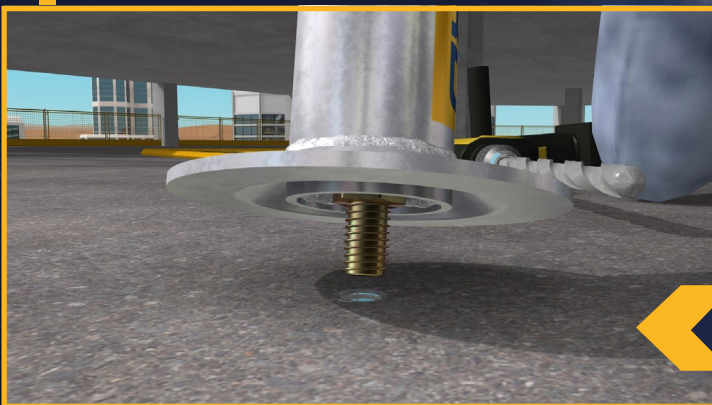
2

Insert the M16
anchor. The anchor must
sit flush with the slab
surface and not sit
above.

Socket Bases continued...

3

Set the anchor with the setting tool. Hammer the tool until solid resistance is encountered.



Note: If the anchor is installed below the surface then the stud can be reversed.

4

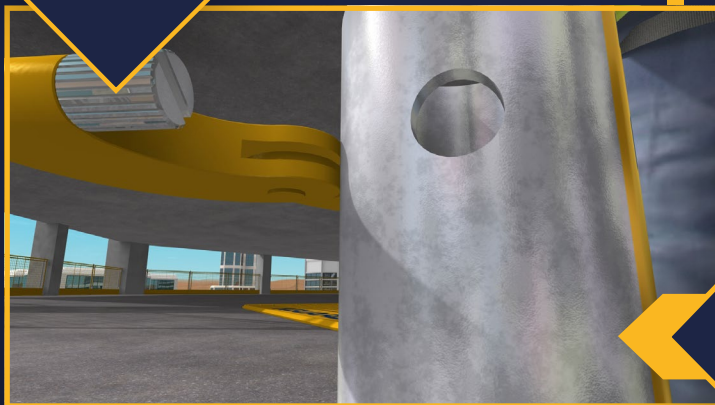
The socket base studs should be fitted as shown. The longer threaded portion fits into the base.

Socket Bases continued...



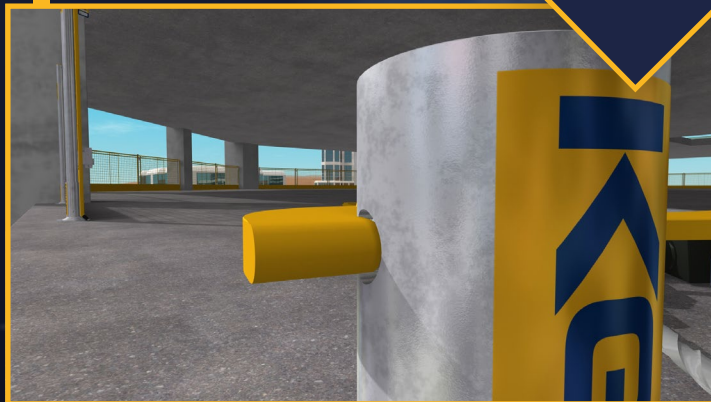
5

Thread the socket base into the anchor until the base section is sitting flush with the concrete surface.



6

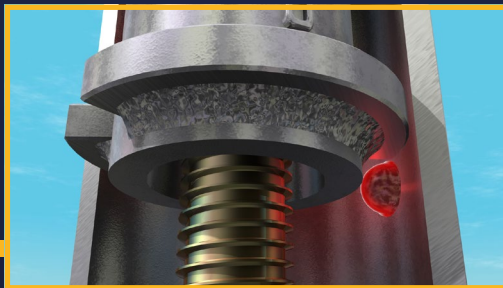
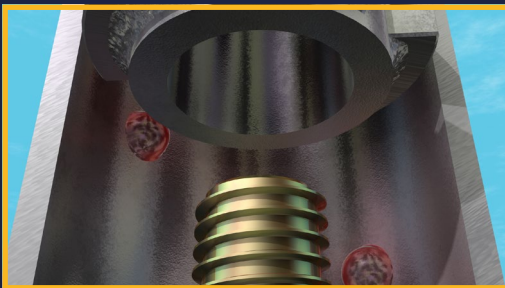
Tighten the socket base with the KGUARD® spanner until fully tightened.



KGUARD®

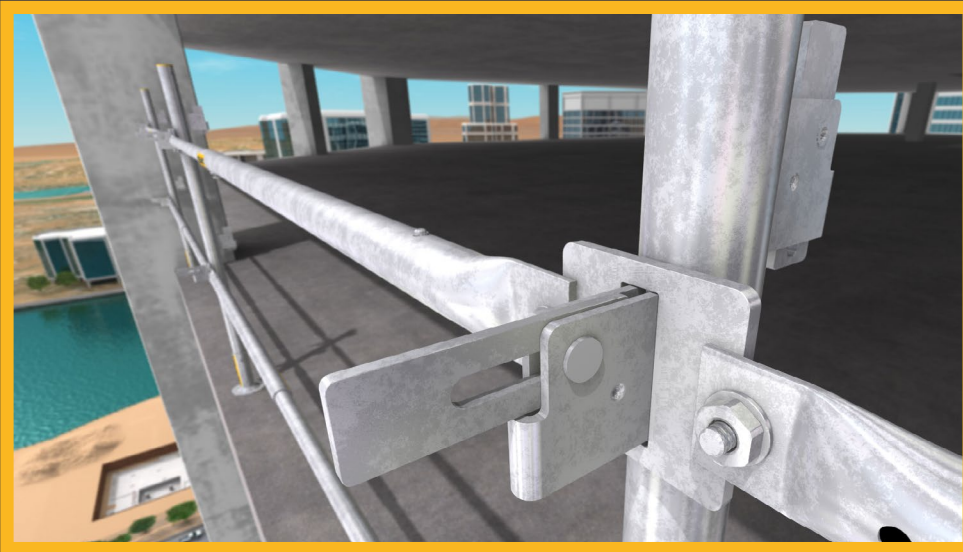
Step 7. M.A.S Safety Post insertion into KGUARD® socket fixings

Insert M.A.S Safety Post and rotate post in any direction to activate the double K-Lock Safety System, ensuring the highest Latch housing is facing inwards.



Step 8.

Open outer housing bracket Latches of the M.A.S Safety Post by unlocking the Latch Plate into the horizontal position.



Step 9.

Place the Upper and Lower Adjustable Link Bars onto the outer housing brackets and then secure in place by locking the Post Latch Plates into the vertical position. Position the Adjustable Link Bars in alternate directions to ensure even spacings between the upper and lower Adjustable Link Bars. Ensure that all Allen Key bolts are tightened when adjusting the Adjustable Link Bars for the correct spacing length.



Step 10.

We highly recommend the fixing of the KGUARD® Safety Inspection Tags through the Latch Plate hole slot with a plastic cable tie or similar to prevent the unauthorised removal of the Adjustable Link Bars.



Step 11.

Open the inner housing bracket Latches of the M.A.S Safety Post by unlocking the Latch Plates into the horizontal position.



KGUARD®

Step 12.

Place the Guard Barriers onto the Inner M.A.S Safety Post housing brackets and secure in place by locking the Post Latch Plates into the vertical position.



Step 13.

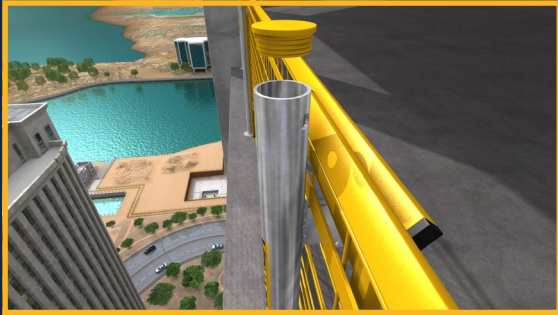
We recommend as an option the fixing of the KGUARD® Safety Inspection Tags to the Inner housing brackets through the Latch Plate hole slot with a plastic cable tie or similar. Ensure the Guard Barriers are installed with the toe board label/logo brand side facing towards the M.A.S Safety Post.



KGUARD®

Step 14.

Adding Extension Height Guard Barriers. Remove the M.A.S Safety Post plastic cap and insert the KGUARD® Extension Post. Ensure the holes of the Extension Post spigot section are correctly aligned with the top hole of the M.A.S safety post and lock in position using the KGUARD® locking pin. Place the KGUARD® Extension Barrier onto the Extension Post housing bracket and lock the safety latches in the vertical position.



Step 15.

We recommend as an option the fixing of the KGUARD® Safety Inspection Tags to the Extension Post housing brackets through the Latch Plate hole slot with a plastic cable tie or similar.

