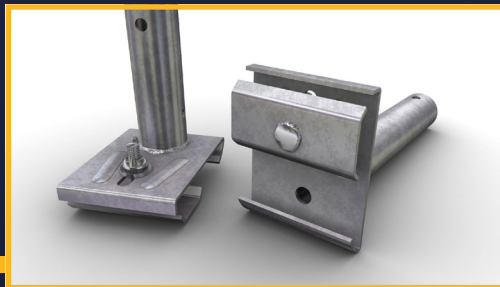
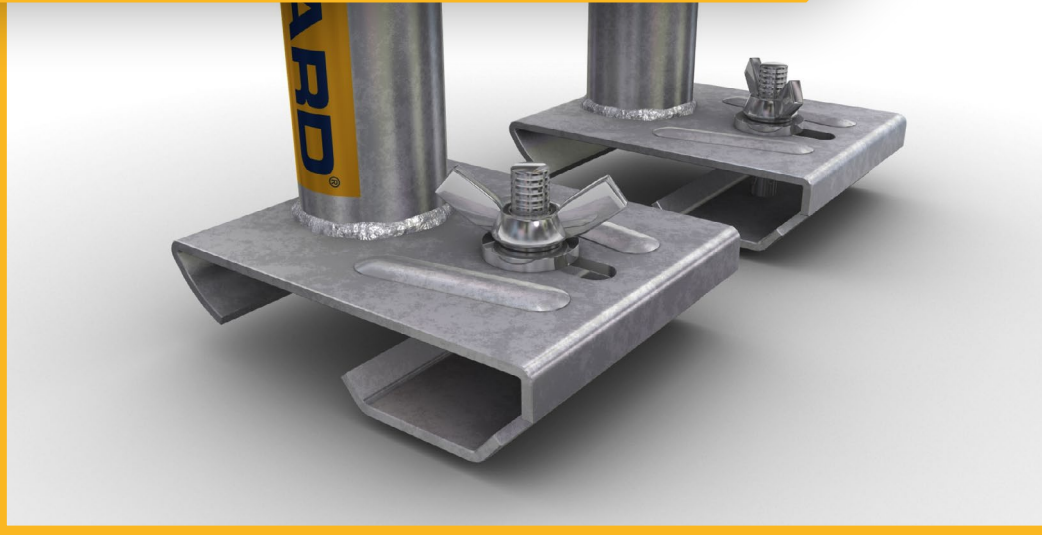


## Aluminium Beam Clamps



Product:	Code:	Weight:
Aluminium Primary Beam Clamp	000020	3.0kg
Aluminium Secondary Beam Clamp	000010	2.5kg

- ◆ K-lock safety system
- ◆ U-Section, compatible with all beam width sizes
- ◆ Mechanical Clamp
- ◆ Speedy Wing Nut locking device
- ◆ Improved safety for high wind loads
- ◆ Primary beam clamp maintains height profile as secondary beam clamp